



# Kiyosato International Orienteering 3 Days

清里国際オリエンテーリング3日間大会

## Bulletin 1

30th August–1st September 2019

Hokuto Japan

### AsJYOC 2019 Spectator Races

- Watch and cheer AsJYOC 2019!
- 3 Days, 4 Races and Multi-Race Competition
- Sprint, Night Sprint, Middle Distance and Long Distance
- Asian Orienteering Cup and World Ranking Event
- Same Terrains as AsJYOC 2019
- Wonderful Forest where you can run anywhere
- Accommodation Arrangement



**Kiyosato 3 days**  
**AsJYOC 2019**  
**SPECTATOR RACES**

# WELCOME !

On behalf of the International Orienteering Federation, Japan is proud to be organizing the 3rd Asia Junior & Youth Orienteering Championships at Kiyosato in Hokuto City.

Along with the Championships, we will be hosting “Kiyosato International Orienteering 3 Days” as the spectator event, in the same terrains as AsJYOC 2019. It will not only be an opportunity to run in the same terrains as the young stars who will lead the next generation, but an opportunity to cheer them on while competing and interacting with fellow orienteers. We are waiting for you at the wonderful forest where you can run anywhere with various types of races.

See you in Kiyosato!

## PROGRAM

### AUGUST–SEPTEMBER 2019

Date	Kiyosato 3 days	AsJYOC 2019
Wednesdy 28th		Opening Ceremony <b>Sprint</b> (Kiyosato Okanokouen, afternoon)
Thursdy 29th	Training Opportunity (Yatsugatake Leisure Center)	Rest Day (Activity)
<b>Fridy 30th</b>	Race 1 <b>Sprint</b> (Kiyosato Okanokouen, First starts at 10:30 a.m.) Extra Race <b>Night Sprint</b> (Kiyosato Okanokouen, First starts at 7:30 p.m.)	<b>Sprint Relay</b> (Seisenryo, afternoon)
<b>Saturdy 31st</b>	Race 2 <b>Middle Distance</b> (Forest in Kiyosato, First starts at 9:00 a.m.) <b>Asian Orienteering Cup/World Ranking Event</b>	<b>Middle Distance</b> (Forest in Kiyosato, afternoon) Closing Ceremony, Banquet
<b>Sundy 1st</b>	Race 3 <b>Long Distance</b> (Forest in Kiyosato, First starts at 9:00 a.m.)	Departure

**After you run, watch and cheer AsJYOC!**

On Friday 30th, after Sprint, we arrange transport to the AsJYOC Sprint Relay event arena.

On Saturday 31st, the Middle Distance event arena is the same as AsJYOC Middle Distance.

# COMPETITIONS

Race	Race 1 Sprint	Extra Race Night Sprint	Race 2 Middle Distance	Race 3 Long Distance
<b>Data</b>	Friday 30th	Friday 30th	Saturday 31st	Sunday 1st
Start Time	10:30 a.m.–	7:30 p.m.–	9:00 a.m.–	9:00 a.m.–
<b>Map/Terrain</b>	<b>Kiyosato Okanokouen</b> (Same terrain as AsJYOC Sprint)		<b>Forest in Kiyosato</b> (Same terrain as AsJYOC Middle Distance)	
Coordinates	N35.904014, E138.431975		N35.945462, E138.423183	
Scale/Contour	1:4,000/2 m		1:10,000/5 m	1:15,000/5 m or 1:10,000/5 m
<b>Start Method</b>	Interval Start	Mass Start	Interval Start	Chasing Start or Interval Start
<b>Event Arena</b>	Kiyosato Okanokouen		Kiyosato Utsukushimori Parking	
Coordinates	N35.904014, E138.431975		N35.937524, E138.421898	
<b>Course Planner</b>	Kosuke Tachibana	Yusuke Hamauzu	Itsuki Ito	Itsuki Ito

# COMPETITION CLASSES

Class	Requirements	Estimated Winning Time			
		Race 1 Sprint	Extra Race Night Sprint	Race 2 Middle Distance	Race 3 Long Distance
<b>ME</b>	IOF ID (AOC and WRE)	12–15 min	12–15 min	30–35 min	70 min
<b>WE</b>	IOF ID (AOC and WRE)	12–15 min	12–15 min	30–35 min	60 min
<b>M/W21</b>	Born 2000 and older	12–15 min	12–15 min	30–35 min	60 min
<b>M/W25</b>	Born 1994 and older	12–15 min	12–15 min	30–35 min	50 min
<b>M/W35</b>	Born 1984 and older	12–15 min	12–15 min	30–35 min	50 min
<b>M/W50</b>	Born 1969 and older	12–15 min	12–15 min	30–35 min	45 min
<b>M/W60</b>	Born 1959 and older	12–15 min	12–15 min	30–35 min	45 min
<b>M/W70</b>	Born 1949 and older	12–15 min	12–15 min	30–35 min	45 min
<b>M/W80</b>	Born 1939 and older	12–15 min	12–15 min	30–35 min	45 min
<b>M/W20</b>	Born 1999 and younger	12–15 min	12–15 min	30–35 min	50 min
<b>M/W15</b>	Born 2004 and younger	12–15 min	12–15 min	30–35 min	50 min
<b>M/W12</b>	Born 2007 and younger	12–15 min	12–15 min	30–35 min	30 min
<b>BL</b>		12–15 min	12–15 min	30–35 min	60 min
<b>BS</b>		12–15 min	12–15 min	30–35 min	40 min

# COMPETITION AREAS

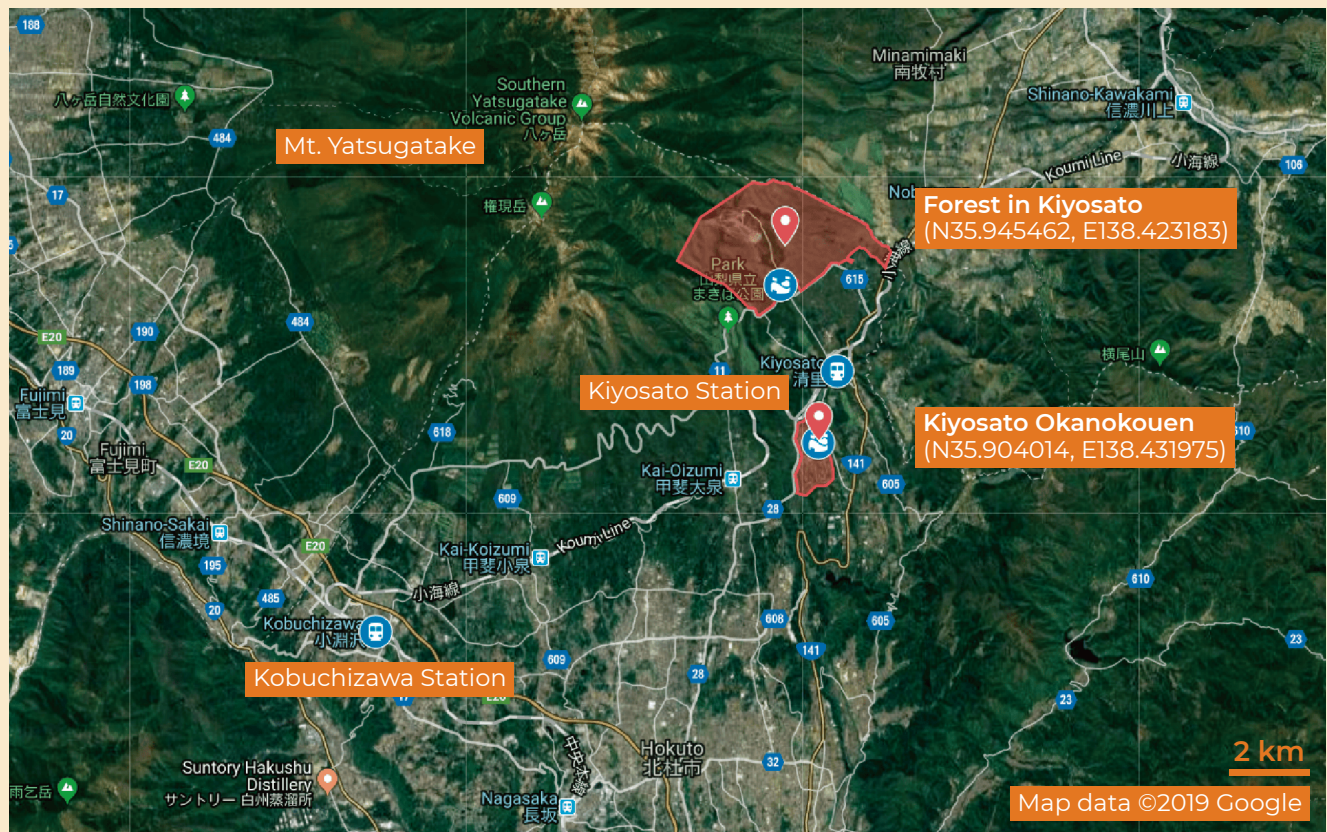
All terrains of the events are located in Hokuto City, Yamanashi Prefecture.



# EMBARGOED AREAS

Any attempt to survey or train in the embargoed areas is forbidden, unless explicitly permitted by the organizer. The previous map of Forest in Kiyosato (Kiyosato Utsukushimori, 1:10,000/5 m, year 2014) can be found on the website. Please check the details on Google Maps:

[https://www.google.com/maps/d/viewer?mid=1pxTI-60bqxSszF-Ce5XmIkMmBI\\_0smul](https://www.google.com/maps/d/viewer?mid=1pxTI-60bqxSszF-Ce5XmIkMmBI_0smul)



# MAPS AND TERRAINS

Maps are newly surveyed in 2019, according to ISSOM2007 for Race 1 Sprint and Extra Race Night Sprint and ISOM2017 for Race 2 Middle Distance and Race 3 Long Distance.

## RACE 1 SPRINT EXTRA RACE NIGHT SPRINT (KIYOSATO OKANOKOUEEN)

**Same terrain as AsJYOC Sprint**

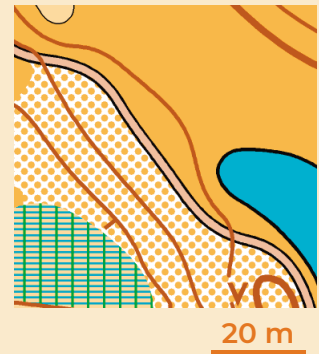
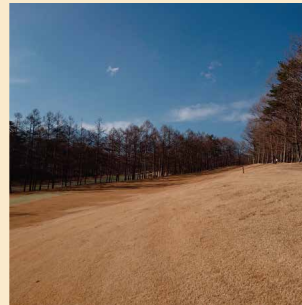
Coordinates: N35.904014, E138.431975

Scale/Contour: 1:4,000/2 m

Event Arena: Kiyosato Okanokouen

The terrain is located about 1,200 m above sea level, southeast of the Yatsugatake Mountains. It is a southward slope with a maximum height

difference of 80m. There are areas of open land and well maintained forests, making runnability relatively very good. Although there is little landform, we see other various prominent features, such as sandy ground, ponds and fences, in open areas.



## RACE 2 MIDDLE DISTANCE RACE 3 LONG DISTANCE (FOREST IN KIYOSATO)

**Same terrain as AsJYOC Middle Distance**

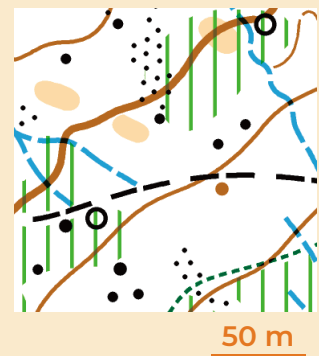
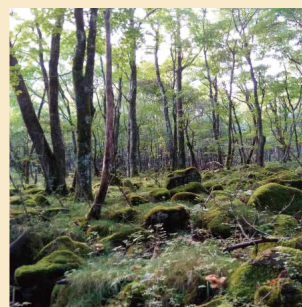
Coordinates: N35.945462, E138.423183

Scale/Contour: 1:10,000/5 m or 1:15,000/5 m

Event Arena: Kiyosato Utsukushimori Parking

The terrain is a southeastward slope, located at the foot of the Yatsugatake Mountains, about 1,500 m above sea level. Most of the terrain has little

contour detail except for parts where we see detailed contours. Visibility is mostly good, but undergrowth lower runnability. We see only a few roads and paths, while there are many minor water channels, boulders and stony grounds. Height difference 200 m.



**For Long Distance, the map will be expanded to a new area from Middle Distance.**

# COMPETITION INFORMATION

## COMPETITION RULES

IOF Competition Rules for Foot Orienteering will apply.

## PUNCHING SYSTEM

The electronic timing and control system SPORTident is used for all competitions. SI-Cards will be prepared for all competitors.

## CLOTHING

There are no restrictions for Race 1 Sprint and Extra Race Night Sprint. For Race 2 Middle Distance and Race 3 Long Distance, competitors must wear clothing that fully covers their torso and legs. Shoes with any kind of metal (spikes, dobb spikes) are not allowed for Sprint and Night Sprint. Choice of footwear is free for Middle Distance and Long Distance.

## CLIMATE

August is the hottest month in Hokuto City. Average temperature is 24 °C while it can reach more than 30 °C on the hot days. However, the competition will be held in the highlands, higher than 1,000 m above sea level, where it will be cooler and less humid.

## AOC AND WRE (RACE 2 MIDDLE DISTANCE)

In Race 2 Middle Distance, ME and WE class are designated as the World Ranking Event (WRE) and the Asia Orienteering Cup (AOC). Competitors must register as an **IOF athlete** at IOF Eventor before entry.

## CHASING START (RACE 3 LONG DISTANCE)

Race 3 Long Distance will be a chasing start based on the difference of the total time of Race 1 Sprint and Race 2 Middle Distance (does not include Extra Race Night Sprint). The chasing start target will be within 20 minutes of the leader. Competitors who have a time difference of over 20 minutes, or who have not ran enough races, will be starting with an interval start.

## EXTRA EVENT (EXTRA RACE NIGHT SPRINT)

As the extra event, we will hold Extra Race Night Sprint on the night of Friday 30th at Kiyosato Okanokouen.

This race is not eligible for the prizes. Transportation detail is to be announced.

## PRIZES (OVERALL RESULTS AND WRE)

Prizes will be given to the top three in the overall results (total time of Race 1, 2 and 3) of each class. Top six of ME and WE in Race 2 Middle Distance (WRE) will also be given prizes.

## TRAINING OPPORTUNITY

We will arrange training opportunity on Thursday 29th at Yatsugatake Leisure Center in Hokuto City. Further information will be announced.

## ENTRY AND PAYMENT

You can register online via **Japan-O-entry** (JOY). Please register and make payments for entry fee and accommodation fee according to the guidance. Credit payments and bank transfers are available. Please note that the payer is responsible for all bank fees and charges. Entry will open and the guidance will be announced in **late May 2019**.

## ENTRY FEE

Entry fee and accommodation fee are non-refundable without exception.

Date	Race		Born 1996 and older	Born 1997 and younger	Born 2001 and younger
Friday 30th	Race 1	Sprint	JPY 2,500	JPY 2,000	JPY 1,500
Friday 30th	Extra Race	Night Sprint	JPY 1,500	JPY 1,500	JPY 1,000
Saturday 31st	Race 2	Middle Distance	JPY 3,500	JPY 3,000	JPY 2,000
Sunday 1st	Race 3	Long Distance	JPY 4,500	JPY 3,500	JPY 2,500

## ENTRY DEADLINE

The deadline for entry and payment is **15th July 2019**.

## ACCOMMODATION

We will arrange 2 types of accommodation in Kiyosato for two nights (Friday 30th and Saturday 31st). Please be aware that arrangements will be made on a first-come, first-served basis. We will arrange transport between accommodation and event arenas (does not include Extra Race Night Sprint).

### TYPE A: PENSION

Small family-owned hotel (2–3 people)

JPY 8,500 per 1 night per 1 person

including breakfast and dinner

Western-style room



### TYPE B: COTTAGE

Cabin (5–20 people)

JPY 7,500 per 1 night per 1 person

Including breakfast and dinner

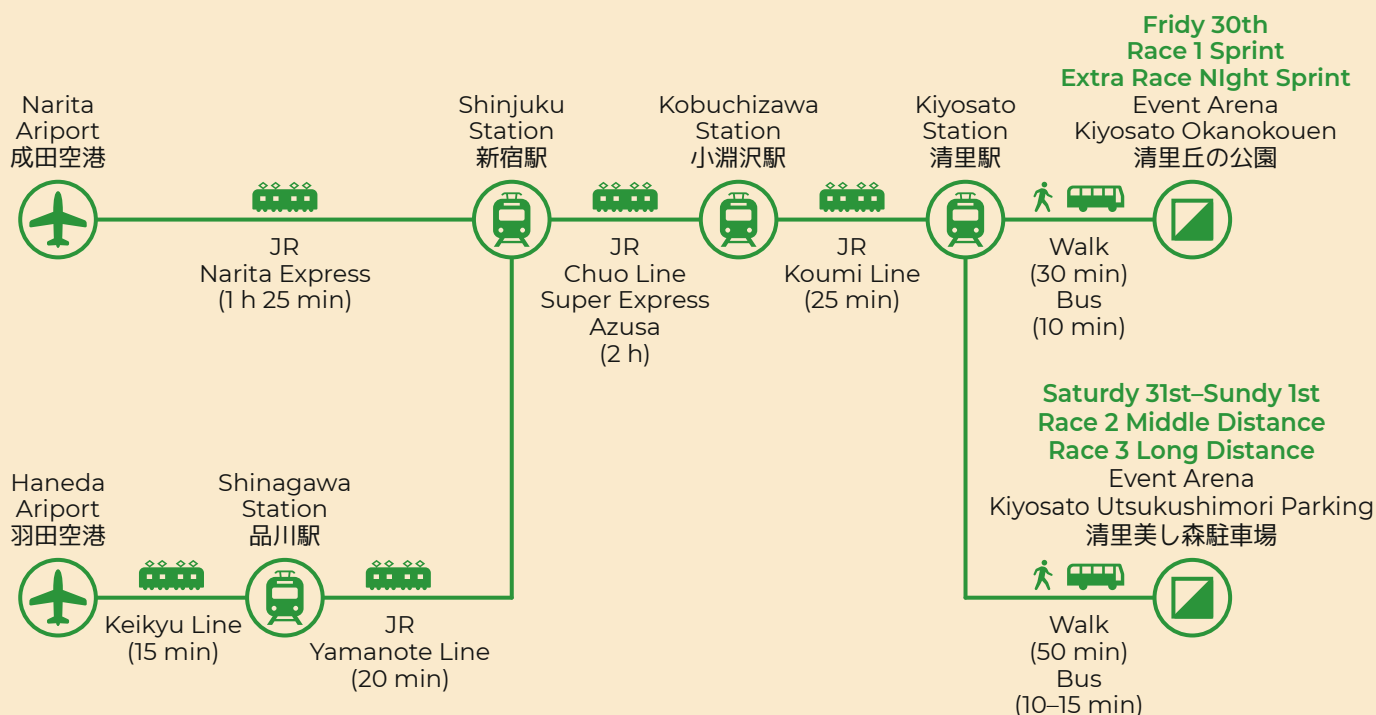
Japanese-style room





# TRANSPORT

## By Public Transport



## By Car

You can park your car at a walking distance to the event arenas.



# EXTRA ACCOMMODATION AND TRANSPORT

If you have extra requests, i.g. accommodation before events, extra transport from the airport, please consult us upon entry. However, please note that it may not be possible to meet your request.

# VISA REQUIREMENT

For information for visa requirement to visit Japan, please check the website of the Ministry of Foreign Affairs of Japan: [https://www.mofa.go.jp/j\\_info/visit/visa/index.html](https://www.mofa.go.jp/j_info/visit/visa/index.html)

# INSURANCE

Insurance is the responsibility of the participant. The organizer will not be liable for any kinds of damage caused.

## EVENT OFFICIALS

Organizer: AsJYOC 2019 Executive Committee, Orienteering Club Tortoise  
IOF Event Advisor: Yoonsun Cha  
Event Director: Kei Hamano  
Event Secretary: Yuta Yoshizawa  
Course Manager: Kenji Kusunoki

## CONTACT

If you have any questions, please contact the following email address.

Email: [asjyoc2019.hokuto@gmail.com](mailto:asjyoc2019.hokuto@gmail.com)

Website: <http://www.orienteering.or.jp/asjyoc2019/>

Twitter: <https://twitter.com/asjyoc2019japan/>

Instagram: <https://www.instagram.com/asjyoc2019japan/>

Facebook: <https://www.facebook.com/asjyoc2019japan/>